

# ALPJOBS

*Anticipate Future Jobs on Alpine Remote Areas*

## **Youth and work on Alpine Marginal Areas of Provincia di Bolzano/South Tyrol**

6th September 2018

**Andre MALLOSEK**

Palazzo Gallo, Castello Tesino (TN) - Italy



This project is co-financed (ARPAF funds) by the European Union

# Plattform Land

**Plattform Land** is an association founded in April 2017 consisting of most trade associations, the Raiffeisen association, the chamber of commerce, the Land South Tyrol, the association of the South Tyrolean municipalities and some social organisations (workers, youth and seniors) in South Tyrol.

## **Main goals:**

Sustainable development of rural areas  
Intelligent land use

**Approach:** Two consulting committees with experts established (one for each goal)

## **Management:**

Andreas Schatzer (President)  
Leo Tiefenthaler (Vice-President)  
Ulrich Höllrigl (Manager)

# „Structurally disadvantaged areas“ in South Tyrol

In 2016 the statistical institute ASTAT carried out a study on structurally disadvantaged areas in South Tyrol, grouped into different clusters where the most disadvantaged clusters had an **unfavourable demographic situation, low economic value and low touristic relevance**. Most of the disadvantaged communities were located in the western part in South Tyrol Vinschgau, which is also the area with the least tourism. This findings supported a previous study of the Wirtschaftsforschungsinstitut in South Tyrol in 2011 about the social and economic structure in South Tyrolean municipalities:



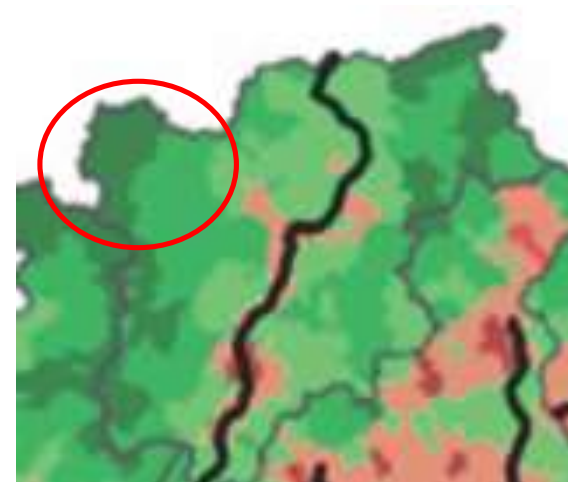
## „Inner areas“ in Italy

At the national level the so-called “Inner Areas” are defined as territories substantially far from centers offering essential services and thus characterized by depopulation and degradation. Demographic trends, access to healthcare and adequate education are just some of the essential criteria to define and classify Inner Areas. These areas (green) currently cover approximately 60% of the Italian territory and host nearly 13.540 million people.

Italy



South Tyrol-Trentino  
(Vinschgau is circled)



# LEADER in Europe and South Tyrol

LEADER (an acronym in French meaning Links between actions for the development of the rural economy) is a European Union initiative to support rural development projects initiated at the local level in order **to revitalize rural areas and create jobs**. They are therefore easy to define and compare in the EUSALP context and our project. In South Tyrol we have 6 LEADER areas, the most disadvantaged according to the ASTAT indicators is Vinschgau, our selected study area:



At the LEADER-area level we already have existing studies and data available in the local development plan. Considering the transferability of our findings in the project ALPJOBs to other EUSALP regions we suggest **LEADER-areas as a common definition for remote areas**.

# Reasons for choosing LEADER Vinschgau

Our topic: Demographic changes: initiatives against depopulation in remote areas

**Depopulation:** Specific focus needs to be on young generations, which generally move out of remote areas for higher education and do not come back to their villages of origin (brain drain). It aims at developing innovative products and services in the tourism sector with the identification and implementation of concrete projects which make use of the available human resources in remote areas, innovating business development models.

Although South Tyrol in general attracts more and more people, the area with the lowest growth of population is the LEADER area Vinschgau. Only 35.000 people are living there and the population density is only about 25 people/km<sup>2</sup>, the lowest in South Tyrol.

“A problem is the so-called brain drain, mostly young and educated people who leave the area due to the lack of adequate jobs in the area.” (statement taken from local development plan LEADER Vinschgau).

## Reasons for choosing LEADER Vinschgau

Another reason for choosing Vinschgau is the lowest importance of tourism of this area in South Tyrol:

### Rangordnung der Bezirksgemeinschaften nach dem Gesamtindex des Tourismus - Tourismusjahr 2015/16

### Graduatoria delle comunità comprensoriali secondo l'indice generale del turismo - Anno turistico 2015/16

Stelle	BEZIRKSGEMEINSCHAFTEN	Über- nachtungen Presenze	Beherber- gungsdichte Densità ricettiva	Tourismus- intensität Intensità turistica	Auslastung der Betten Utilizzazione dei posti letto	Gesamtindex des Tourismus (a) Indice generale del turismo (a)	Pos.	COMUNITÀ COMPRESORIALI
1	Pustertal	9.544.423	32,8	32,0	38,4	100,0	1	Val Pusteria
2	Salten-Schlern	5.613.213	38,2	31,0	38,8	89,1	2	Salto-Sciliar
3	Burggrafenamt	7.012.742	38,6	18,9	45,1	86,1	3	Burgraviato
4	Bozen	634.096	67,8	1,6	49,2	64,9	4	Bolzano
5	Eisacktal	2.828.203	33,0	14,9	37,5	61,6	5	Valle Isarco
6	Überetsch-Südt. Unterl.	2.143.670	41,0	7,9	33,7	53,9	6	Oltradige-Bassa Atesina
7	Wipptal	1.328.772	15,1	18,1	36,9	51,4	7	Alta Valle Isarco
8	Vinschgau	2.312.419	13,1	17,9	33,5	51,3	8	Val Venosta

(a) Summe der standardisierten Werte folgender Kennzahlen: Übernachtungszahl, Beherbergungsdichte, Tourismusintensität und Bettenauslastung  
 Aggregazione dei valori standardizzati dei seguenti indicatori: numero di presenze, densità ricettiva, intensità turistica e utilizzazione dei posti letto

## Reasons for choosing LEADER Vinschgau

The aim of EUSALP: The field of intervention would aim at reinforcing skills (technological, linguistic, cultural knowledge of the territory), also through specific/territory targeted educational paths promoting new forms of tourism by valorizing local culture, promoting innovative models on tourism off-peak seasons and reinforce local identity linked to the territory.

A first step to counterbalance the brain drain in the LEADER area Vinschgau is the EFRE-Project BASIS in Schlanders, where an innovation hub for local businesses and start-ups from all sectors in combination with educational institution is to be established in a formerly military building.



Planned:

- co-working space
- open factory
- bar, pub
- event hall
- meeting rooms
- food elaboration room

In this building some of our interviews of the peer-groups should take place in summer 2018.



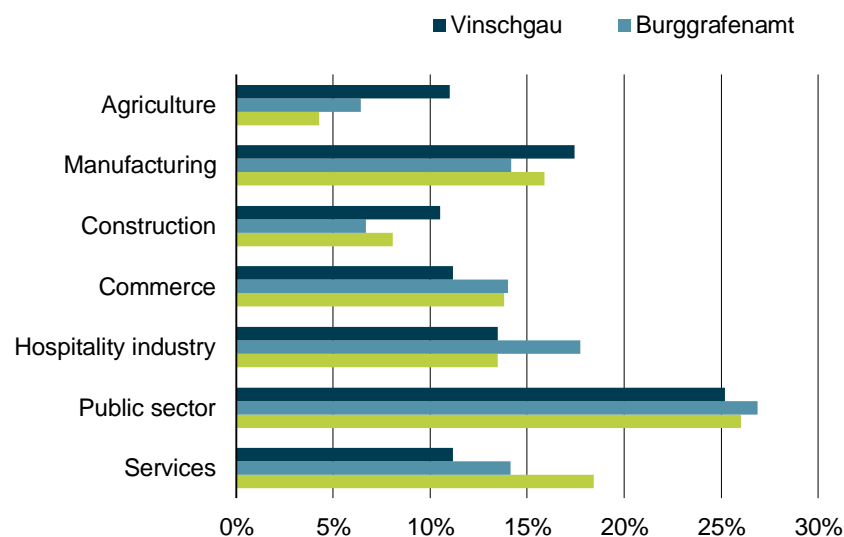
## Youth and Jobs in Vinschgau

Despite an almost constant population in the Vinschgau in recent years, the number of employees has risen continuously. Between 2005 and 2015, an increase of around 21.5 percent was recorded. Across the province, the number of employees has grown slightly less over the same period.

In the district of Vinschgau as well as at the provincial level most employees work in the public sector, however, there are some differences: The agricultural and construction sectors in the Vinschgau employ relatively more people than they do in the other parts of the province.

### Employees by sector - 2017

In percent



Source: Amt für Arbeitsmarktbeobachtung; elaboration WIFO

© 2018 WIFO

## Youth and Unemployment in Vinschgau

In 2015, the unemployment rate in the Vinschgau, calculated according to the method of the local statistical office “Amt für Arbeitsmarktbeobachtung” , was 4.5 percent, well below that the provincial level.

Another indicator of unemployment is the so-called official unemployment rate of ASTAT, which follows Eurostat's methodology. In this respect, South Tyrol has a total value of 3.8 percent in 2015, whereas no clear values are available for the Vinschgau district.

In 2015, the estimated official unemployment rate (according to EU standards) was 3.0 percent in the small region of "Mals" and 4.1 percent in the small region of "Schlanders", which is below or in the South Tyrolean average.

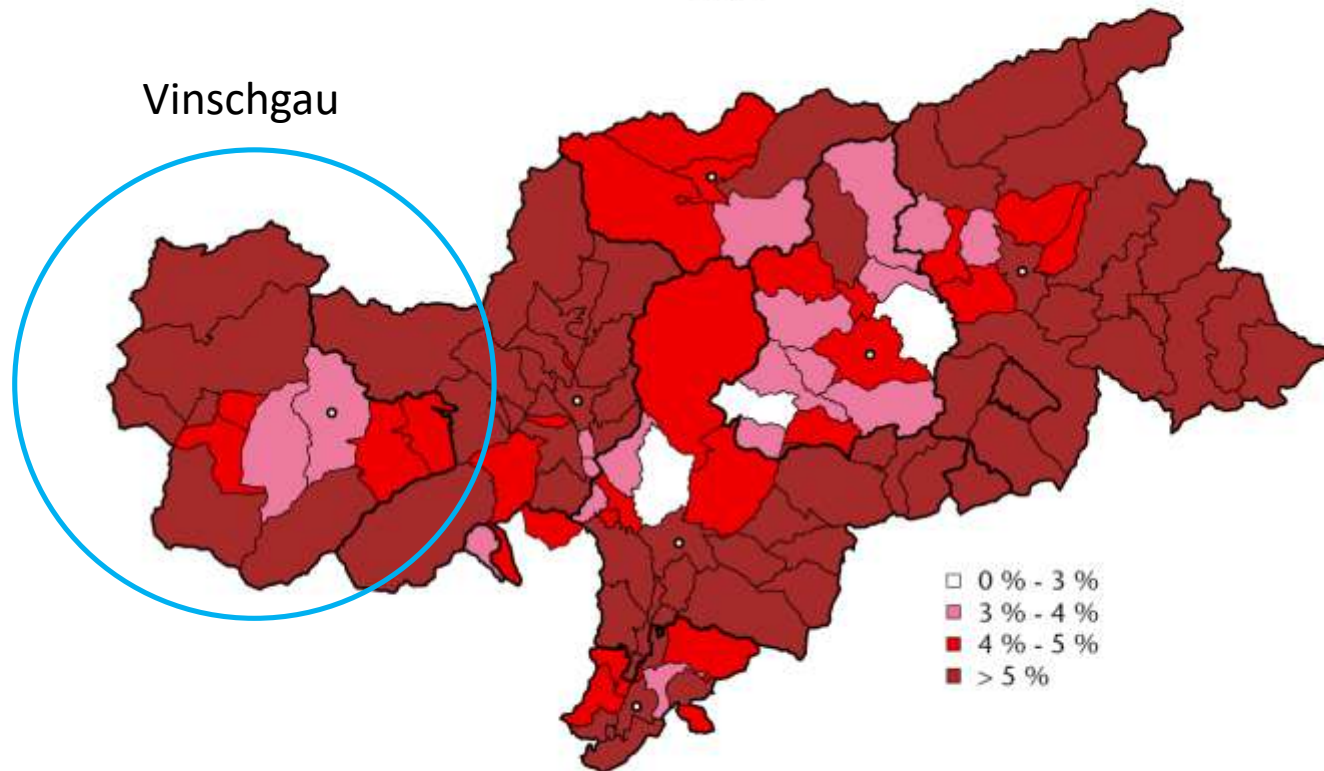
Interestingly the official unemployment rate is decreasing in recent years (actually below 3 % in South Tyrol), whereabout the unemployment rate of the local statistical office is rising in the last 10 years.

Generally the youth unemployment is compared with other regions in the EU very low with about 9% in 2016.

# Unemployment in Vinschgau

Abteilung Arbeit  
Ripartizione Lavoro  
Quelle: Arbeitsservice, Amt für Arbeitsmarktbeobachtung  
Fonte: Ufficio servizio lavoro, Ufficio osservazione mercato del lavoro

Arbeitslosenquote\*  
Tasso di disoccupazione\*  
2016



# Working in Switzerland – living in Vinschgau

A special aspect of a border region:

At present, between 1,000 and 1,500 inhabitants of Vinschgau commute to work in Switzerland. The number of cross-border commuters is currently 50 to 70 percent higher than in 2005 (Amt für Arbeitsmarktbeobachtung), which is probably the decisive reason for the comparatively positive development of the unemployment rate in Vinschgau. Especially in the canton of Graubünden (in nearby Engadin, in the Münster valley and in Samnaun) the people of the Upper Vinschgau tend to find work - without having to relocate.

## Recent developments in South Tyrol and neighbouring regions

Erwerbstätigenquote (20-64 Jahre)	2015	2016	2017	Tasso di occupazione (20-64 anni)
Südtirol	76,7%	78,2%	78,4%	Provincia di Bolzano
Trentino	71,4%	71,4%	73,0%	Provincia di Trento
Tirol	77,9%	77,8%	77,9%	Tirol
Ostschweiz	83,4%	83,7%	84,3%	Svizzera orientale

Arbeitslosenquote	2015	2016	2017	Tasso di disoccupazione
Südtirol	3,8%	3,7%	3,1%	Provincia di Bolzano
Trentino	6,8%	6,8%	5,7%	Provincia di Trento
Tirol	3,0%	3,5%	3,3%	Tirol
Ostschweiz	3,9%	3,5%	3,3%	Svizzera orientale

Quelle: Eurostat

Fonte: Eurostat